

'90
SunLine



Brochure by
SunLine Fan



R-5



When it comes to building RVs, experience counts. And Sunline builds 25 years' worth of design, construction, and road-testing experience into each 1990 model. The result? RVs known for quality, consumer satisfaction, and value.

From the outside in, quality improvements for 1990 start with a new, light gray, baked enamel, aluminum exterior protected by a clear, polyester coating.

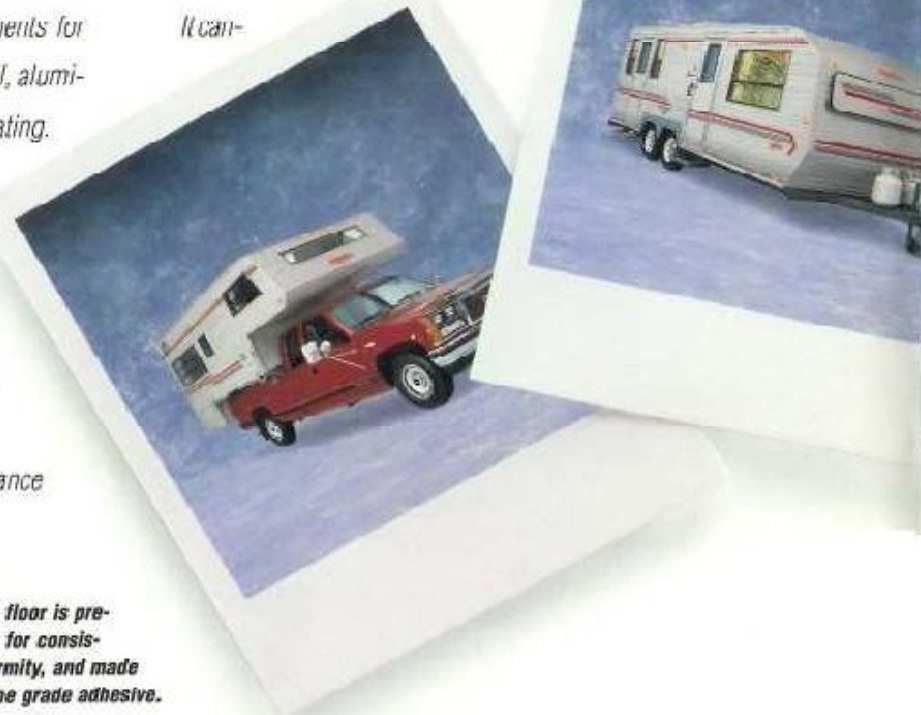
The new premium coating, Krystal Kote™, outperformed conventional paint in a five year test for resistance to fade, chalking and dirt retention. No RV stands up to sun, water, humidity and heat any better than Sunline.

Another performance

Structurewood® floor is precisely engineered for consistency and uniformity, and made of tough, marine grade adhesive.

improvement for 1990 is blanket R-5 fiberglass side-wall insulation. Simply put, a blanket is superior to hit-or-miss, "fill-in-the-gap" insulation commonly used.

For 1990, all Sunline models feature Polymax™ undersiding, a significant advance over aluminum. Polymax is puncture resistant, stable at all temperatures, and lightweight. It can—



not rattle, rust, corrode, or separate. In short, it is the RV industry's best material for protective undersiding.

On top, nothing beats Sunline's one-piece, baked enamel, manufactured aluminum roof. With no screw seams to ever separate, and with tapered rafters for drainage, Sunline's roof remains weathertight.

When you think about who builds Sunline RVs, their quality shouldn't come as a surprise. In Lancaster County, Pennsylvania Dutch craftsmanship is a centuries old tradition. No wonder then that Sunline builds its own cabinets, and sews many of its own fabrics. No wonder Sunline builds units to meet or exceed RVIA life and fire safety standards



as well as federal codes. No wonder Sunline checks electrical, heating, plumbing, and air conditioning systems as part of a 19 point quality control certification. No wonder that Sunline people, who design, test and use their RVs, find ingenious ways to use space — as in Sunline's popular pantry.

How far will Sunline innovation and traditional strengths take 1990 models into the future? No one can say for sure. But we do know that many early Sunline RVs are still going strong into their third decade.

Many more quality differences — new and traditional — await you in the following pages.



Scene, Lancaster County, Pennsylvania

Sunline edges most countertops in solid oak. Formica® brand laminates used for work surfaces.

Contents	
Travel Trailers	4-5
13.5 Feet to 35.5 Feet	16-19
Floorplans & Specs	6-7
Fifth Wheels	20-21
21.5 Feet to 30 Feet	8-9
Floorplans & Specs	20-21
Truck Campers	10-11
7.5 Feet to 11.5 Feet	22-23
Floorplans & Specs	12
StarRay Travel Trailers	13
15.5 Feet to 35.5 Feet	14-15
Floorplans & Specs	24
Construction	24
Seville Package	
Optional Equipment	
Fabrics & Lancaster Package	
Safety/Warranty	



Flexsteel® chair



Flip-up bed w/cedar-lined storage



Sofa bed open

T esting 1-2-3.

Perfecting RVs has been Sunline's top priority for 25 years. Sunline builds at least two prototypes of each new model. And the 1990 models show the results. **No compromises.** Where some trailers have bins, the popular T-2361 features 14 convenient drawers. **And quiet.** Sound absorbing carpet and padding, sidewall, ceiling and floor insulation, dampen everyday clatter. **Sure road performance.** Comes with Sunline's precise engineering of weight distribution, axle weight ratings, dry cargo capacity, and proper hitch weight. **Shades of home.** This year's new colors? Find them in Sunline's 1990 palette drawn from the home furnishing industry's Color Marketing Group selections.



Good To Know

Sunline's Structurawood floors are guaranteed to never delaminate, warp or buckle like common plywood or composites.

Model T2363 shown with Option B and sofa bed in Peacock.

Flexsteel® is a registered trademark of Flexsteel Industries, Inc.

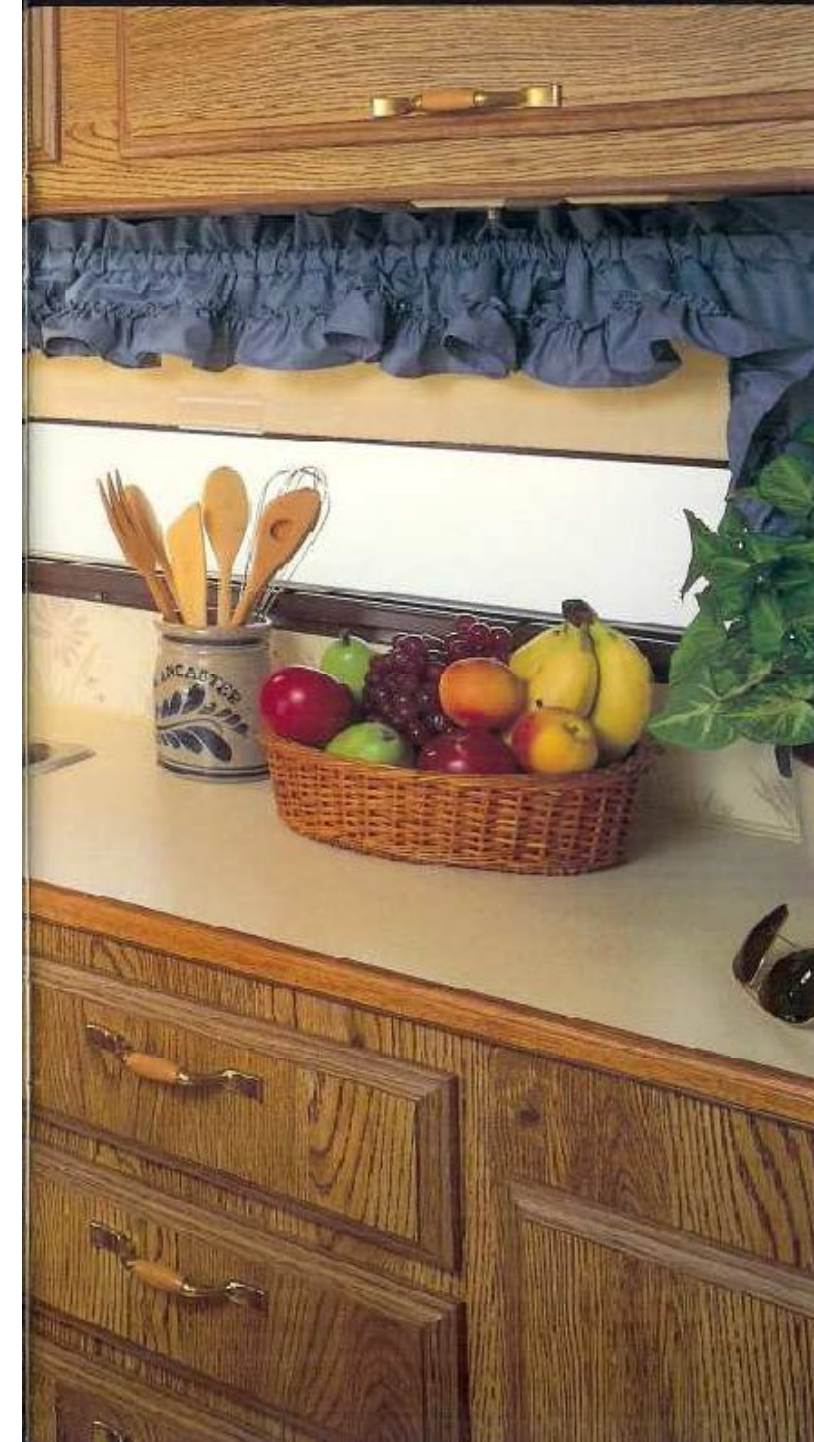




Bath



King pin front hitch



Over Achlevers.

Depend on Sunline to scale 5th Wheels to an exacting match for standard, light duty and compact, long bed pickups. For 1990, a new mini king pin hitch, now manufactured to Sunline specs, offers a smoother towing pivot than the ball mount coupler it replaces. Important, too, the non-permanent king pin requires no cutting to install in the truck bed and is easily removed by one person for cargo hauling. **Sleeping decks.** Feature innerspring twin or double beds and even queen beds in 30 ft. models. **Practically speaking.** Living areas offer many options, including swivel rocker chair opposite a converta (or sofa) bed.

Good To Know

Sunline's new high efficiency Shurflo water pumps supply residential-type pressure but draw less amperage (4 amps vs. 7 amps) than old.

Model F2150 shown in Berry.

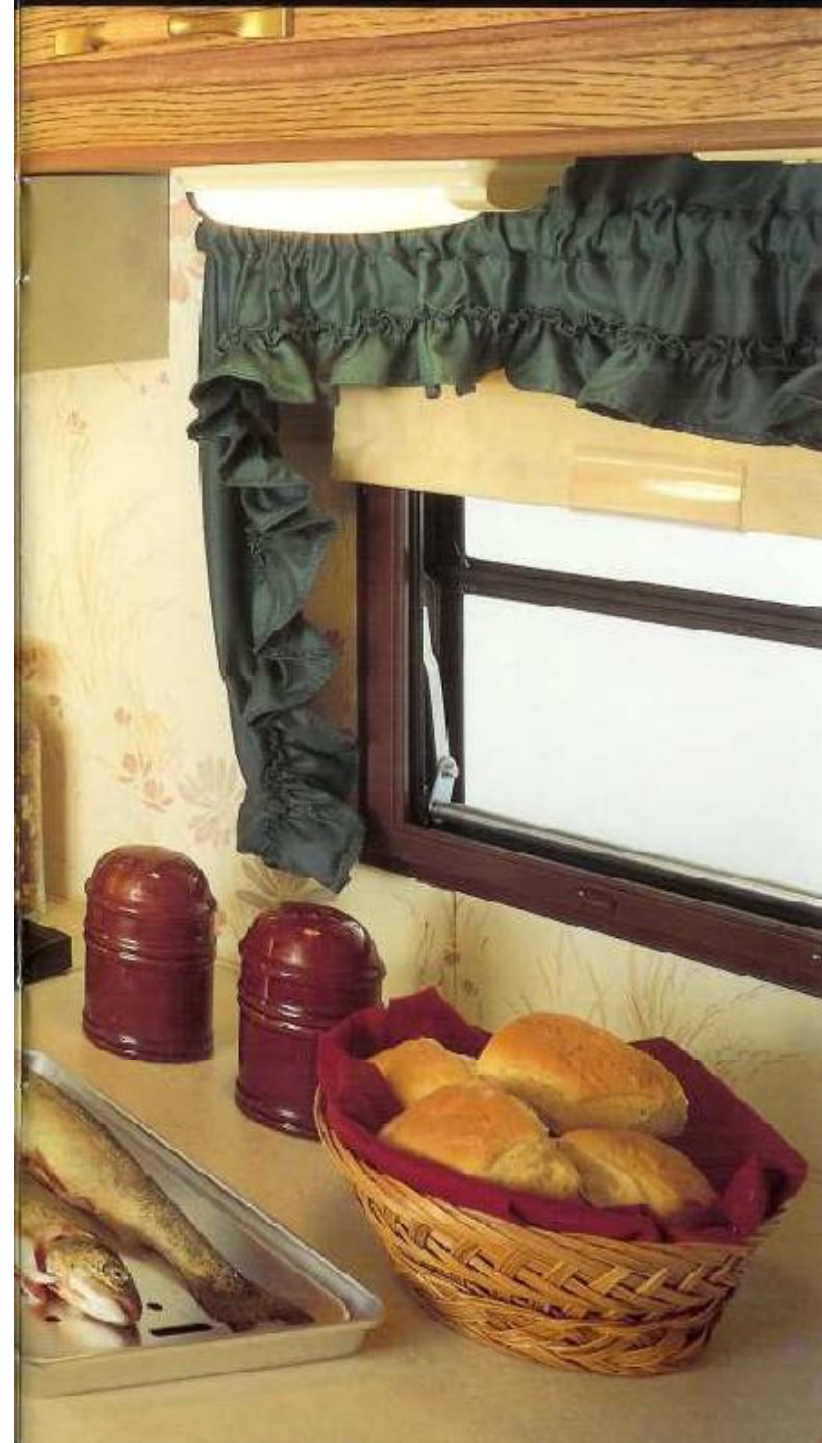




Bath



Milled, fastened and glued



S tandards Count.

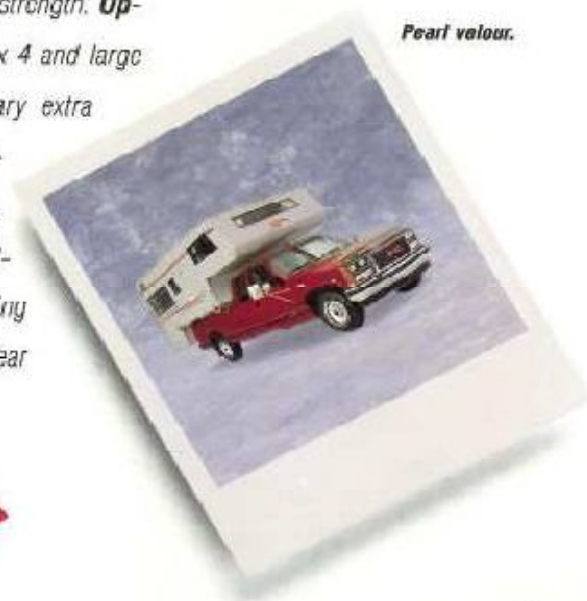
Heated floors, a new standard feature in Sunline's larger truck campers, takes the chill off a cold day. And, just that way, Sunline has added features to its truck campers from the very first built 25 years ago. **Small & large.** Sunline builds truck campers to fit most standard light duty and compact, long bed pickups. **Top drawer.** Like fine cabinetry, drawers and cabinets fastened and glued for extra strength. **Optional extended jacks.** For 4 x 4 and large trucks, these jacks add necessary extra inches to make quick work of installation. **Dual wheel spacers.** For dual wheel trucks, new available spacers fit between mounting plate on camper and jack to clear truck's oversize fenders.



Good To Know

Sunline's premium cast vinyl striping retained a 'like new' appearance despite exposure to ultraviolet rays lasting seven years 'and counting'.

Model C1150 shown with Mauve Pearl valour.





Values Please.

The 'brand names' tell the story. The same, Flexsteel chairs and (optional) sofa beds as top of the line Sunline travel trailers. **Quality appliances.** The same, top quality Dometic refrigerators, Wedgewood® stoves, Hydroflame furnaces, Atwood® water heaters, Thetford toilets, Hehr® windows. **Top undercarriage.** StarRays ride on Dexter axles and Goodrich tires. **Living proof.** Sunline builds them using the same construction methods and materials. Attractive StarRay interiors offer the comfort of 5-inch cushions and Scotchguard protected fabric. Its quality and many floor plans, including a front-and-rear bedroom model, make StarRay a 'best buy' for family camping.



Good To Know

Under Scotchguard™ protected nylon carpet, Sunline's non-allergenic, moth-proof padding both cushions footsteps and absorbs sound.

Model T241 with Standard Front A shown in Canyon Blue.

Scotchguard™ is a trademark of 3M Company. Wedgewood® and Atwood® are registered trademarks of Atwood Mobile Products. Hehr® is a registered trademark of Hehr International, Inc.





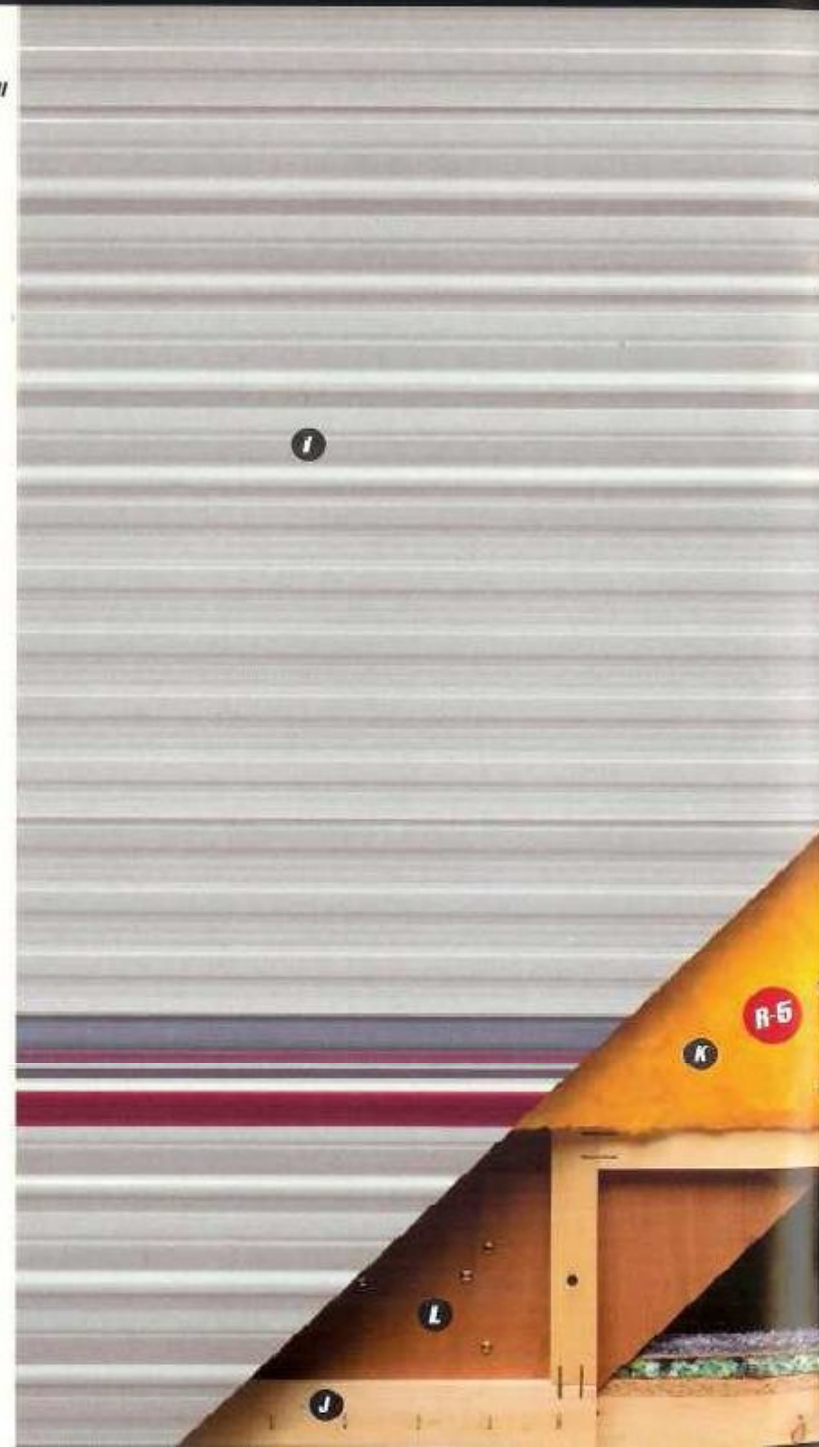
Quality Points.

A Nylon carpet protected by Scotchguard **B** 5/8-inch carpet padding **C** Structurewood floor **D** Fastened and bonded frame **E** R-7 insulation **F** Polymax undersiding and moisture barrier. Primed and painted steel frame **G** One-piece manufactured, baked enamel aluminum roof **H** Seams overlapped, double caulked and sealed **I** Aluminum exterior, baked enamel finish, with protective Krystal Kote **J** Proven, lightweight framing offers durability and cost savings. Framing is fastened and bonded for extra strength **K** Blanket, sidewall R-5 insulation **L** Multiple fasteners secure cabinets to sidewalls, floor and ceiling.



Construction

Sidewall



Seville Option



Contents Luxury.

Order your travel trailer with the Seville Package featuring these popular extras. **A** Towel rack on bath door **B** Deluxe bath fixtures (toothbrush holder, soap dish, tissue holder & towel bar) **C** Folding shower door and ABS plastic tub surround (tub surround N/A in T2250-T2251 and T2400-T2402) **D** Solid oak raised panels on refrigerator door, cabinet doors and drawers **E** Deluxe taillights **F** Porcelain galley sink w/oak cutting board (shown as installed in models 25'-35') **G** Deep oven with black glass door **H** Porcelain bowl foot-operated toilet **I** Solid oak framed mirror with Hollywood lights **J** Shades on all windows (excluding those with venetian blinds) **K** Oak trimmed ceiling lights (except bath)



Good To Know

Seville Package also features cedar-bottom panel in wardrobe and Seville decal mounted on exterior metal.



Please contact your Sunline dealer for a complete list of options available in the model of your choice. Every option may not always be available in every model.

Travel Trailers 13 ft. to 17 ft.
 • Range Top Cover • Cabinet Bunks
 • Oven • Hot Water Heater (gas/electric or auto ignition) • Air Conditioner
 • TV Jack, TV Antenna • Power Roof Vent • Deluxe Taillights • Carpet
 • Velour Upholstery • Towel Rack
 • Storm Windows • Twin 20-lb. Gas Tanks • Smoke Detector • Bunk Ladder • Stabilizer Jacks • Radial Tires • Spare Tire, Carrier, and Cover

Travel Trailers 20 ft. to 35 ft.
 • Optional Swivel Rocker Chair, Sofa, Converta Bed • Deep Oven • Microwave • TV Antenna • Systems Monitor Panel • Folding Shower Door • ABS Tub Surround • Porcelain Bowl Toilet • Gas Detector • Window Shades • Rear Rockguard • Spare Tire, Carrier, and Cover • Stabilizer Jacks • Power Hitch Jack • Deluxe Wheel Covers • Deluxe Lighting Group Featuring 110V Nightstand Light, 110V Globe Dinette Light and Four Oak Trimmed Ceiling Lights (available in trailers 25 ft. and up.)



Deluxe Taillights



Gas Detector



Folding Shower Door



Spare, Carrier & Cover



Towel Rack



Air Conditioner



Microwave Oven



Stabilizer Jacks



AM/FM Cassette Radio



Stereo System



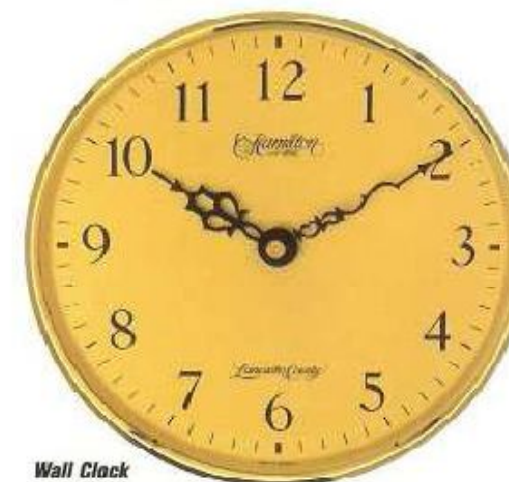
Range Top Cover



Power Roof Vent



Power Hitch Jack



Wall Clock



Deluxe Interior Light Package



Fifth Wheels

• Shower Door • Porcelain Bowl Toilet • Stabilizer Jacks • Spare Tire, Carrier, and Cover • Electric Motor for Fifth Wheel Jack Assembly • TV Antenna • Range Top Cover • Hot Water Heater (gas/electric or auto ignition) • Air Conditioner • Outside Cable • Stereo • Deluxe Taillights • Velour Upholstery

Truck Campers

• Auto Ignition Furnace • Range Top Cover • Air Conditioner • TV Jack • TV Antenna • Power Roof Vent • Deluxe Taillights • Auto Ignition Hot Water Heater • Towel Rack • Velour Upholstery • Extra Camper Jack • 6" Extended Tripod for some 4 x 4 and Higher Trucks

StarRay Travel Trailers

• Sofa Bed • Cabinet Bunks • Inner-spring Beds • Bedspread, Pillow and Sham • Range Top Cover • Air Conditioner • Medicine Cabinet in Bath • Outside Patio Outlet • Patio Light • Stereo • Smoke Detector • Towel Rack • Folding Privacy Door • Stabilizer Jacks • Power Hitch Jack



S

Standard Features T1350-T1740

● Electric Brakes on All Wheels ● 12-V Electric Water Pump ● 6-gal. Gas Water Heater ● Shower* ● 20-lb. Standard L.P. Gas Tank ● 3-Burner Cooking Range (Optional Oven Available) ● Range Hood w/Fan & Light ● 12-V Light System w/Converter & Charger ● 5" Button and Wrap Upholstery *Tub/Shower standard in T1700

S

Standard Features T2050-T2493

● Electric Brakes on All Wheels ● 12-V Electric Water Pump ● 6-gal. Gas Water Heater ● Shower & Tub ● Two 20-lb. Standard L.P. Gas Tanks ● 4-Burner Cooking Range w/Oven ● Range Hood w/Fan & Light ● 12-V Light System w/Converter & Charger ● 5" Button and Wrap Upholstery



T1350



T1550



T1661



T2241



T2242



T2243

Specifications	T1350	T1550	T1661	T1700	T1740	T2050	T2241	T2242	T2243	T2250	T2251	T2361	T2362	T2363	T2364
Length	13'10"	15'11"	16'10"	17'10"	17'10"	20'10"	22'4"	22'4"	22'4"	22'8"	22'8"	23'2"	23'2"	23'2"	23'2"
Body Width	6'3"	7'	7'	7'	7'	8'	8'	8'	8'	8'	8'	8'	8'	8'	8'
Interior Height	6'1"	6'1"	6'1"	6'1"	6'1"	6'4"	6'4"	6'4"	6'4"	6'4"	6'4"	6'4"	6'4"	6'4"	6'4"
Axle(s)	Single	Single	Single	Tandem	Tandem	Tandem	Tandem	Tandem	Tandem	Tandem	Tandem	Tandem	Tandem	Tandem	Tandem
Axle Weight* (Lbs.) Empty Approx.	1590	1930	1940	2055	2090	2770	N/P	N/P	N/P	3055	2985	3090	3045	3025	3110
Hitch Weight* (Lbs.) Empty Approx.	150	235	240	325	300	330	N/P	N/P	N/P	345	350	470	455	500	445
Gross Vehicle Weight* Approx.	1740	2065	2180	2380	2390	3100	N/P	N/P	N/P	3400	3335	3550	3500	3525	3555
Tire Size—Load Range	B/8-13-C	F/8-14-C	F/8-14-C	B/8-13-B	B/8-13-B	C/8-14-B	C/8-14-B	C/8-14-B	C/8-14-B	C/8-14-B	C/8-14-B	F/8-14-B	F/8-14-B	F/8-14-B	F/8-14-B
Gross Vehicle Weight Rating Lbs.	2500	3000	3000	4000	4000	4480	4480	4480	4480	4480	4480	5000	5000	5000	5000
Fresh Water System (Approx. Gals.)	24	24	24	24	24	24	34	34	34	24	24	34	34	34	34
Gray Water System (Approx. Gals.)	21	21	25	25	25	25	25	25	25	25	25	25	25	25	25
Septic System (Approx. Gals.)	12	10	25	25	25	25	25	25	25	25	25	25	25	25	25
Stainless Steel Sink	Single	Single	Double	Double	Double	Double	Double	Double	Double	Double	Double	Double	Double	Double	Double
Refrigerator, Gas/Elec., Dometic Model	2301-2	2301-2	2301-2	2301-2	2301-2	2501-2	2501-2	2501-2	2501-2	2501-2	2501-2	2501-2	2501-2	2501-2	2501-2
Furnace (Gas) w/Automatic Ignition BTU's	Opt.	Opt.	Opt.	Opt.	Opt.	20,000	20,000	20,000	20,000	20,000	20,000	20,000	20,000	20,000	20,000
Furnace (Gas) w/Piezo Ignition (BTU's)	12,000	12,000	12,000	16,000	16,000	N/A	N/A	N/A	N/A	N/A	N/A	N/A	N/A	N/A	N/A
Sleepers (Optional)	3(4)	4(6)	4(5)	3(4)	4(6)	6	6	6	6	7	7	5	5	5	6
Dinette Bed	73"x75"	43"x74"	36"x72"	36"x74"	43"x74"	48"x76"	48"x76"	48"x76"	48"x76"	40"x75"	56"x76"	N/A	N/A	N/A	N/A
Front Lounge Bed	N/A	N/A	48"x75"	48"x75"	48"x75"	N/A	N/A	N/A	N/A	54"x75"	54"x75"	48"x75"	48"x75"	48"x75"	48"x75"
Rear Lounge Bed	N/A	48"x75"	N/A	N/A	54"x75"	54"x75"	N/A	N/A	N/A	N/A	N/A	N/A	N/A	N/A	N/A
Innerspring Twin Bed**	N/A	N/A	N/A	N/A	N/A	N/A	N/A	32"x74"	N/A	N/A	N/A	32"x74"	N/A	N/A	N/A
Innerspring Double Bed**	N/A	N/A	N/A	N/A	N/A	54"x74"	N/A	54"x74"	N/A	54"x74"	N/A	54"x74"	N/A	54"x74"	N/A
Cabinet Bed(s)	Opt (1)	Opt (2)	Opt (1)	Opt (1)	Opt (2)	Std (2)	Std (2)	Std (2)	Std (2)	Std (1)	Std (1)	Std (1)	Std (1)	Std (1)	N/A
Upper Criss-Cross or Stack Bunks, 5" Foam	N/A	N/A	N/A	N/A	N/A	N/A	N/A	N/A	N/A	32"x74"	32"x74"	N/A	N/A	N/A	28"x74"(2)
Lower Criss-Cross or Stack Bunks, 5" Foam	N/A	N/A	N/A	N/A	N/A	N/A	N/A	N/A	N/A	32"x74"	32"x74"	N/A	N/A	N/A	32"x74"(2)

◆ Ducted

▲ Outside Storage/

Fluoroplastics Only

● w/Marine Toilet

Std. Standard Equipment

N/A-Not Available

Opt. Optional Equipment

N/P-Not Available at

time of printing.

*All weights are for standard equipped models. Weights will vary according to installation and distribution of options and self-containment liquids and construction materials. **Includes bedspread(s), pillow(s) and sham(s).



T1700



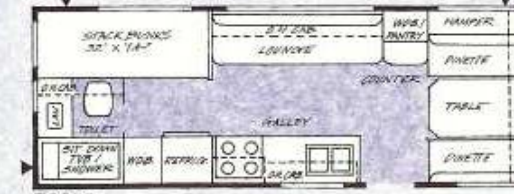
T1740



T2050



T2250



T2251



T2361

STANDARD FRONT A/T2361-T2364

See below for optional front available.

T2400	T2402	T2480	T2491	T2492	T2493
-------	-------	-------	-------	-------	-------

24'0"	24'0"	24'10"	24'11"	24'11"	24'11"
-------	-------	--------	--------	--------	--------

8'	8'	8'	8'	8'	8'
----	----	----	----	----	----

6'4"	6'4"	6'4"	6'4"	6'4"	6'4"
------	------	------	------	------	------

Tandem	Tandem	Tandem	Tandem	Tandem	Tandem
--------	--------	--------	--------	--------	--------

3175	3215	3210	3205	3170	3150
------	------	------	------	------	------

430	415	515	460	445	490
-----	-----	-----	-----	-----	-----

3605	3630	3725	3665	3615	3640
------	------	------	------	------	------

F78-14-B	F78-14-B	F78-14-B	F78-14-B	F78-14-B	F78-14-B
----------	----------	----------	----------	----------	----------

5000	5000	5000	5000	5000	5000
------	------	------	------	------	------

24	24	32	34	34	34
----	----	----	----	----	----

25	25	25	25	25	25
----	----	----	----	----	----

25	25	25	25	25	25
----	----	----	----	----	----

Double	Double	Double	Double	Double	Double
--------	--------	--------	--------	--------	--------

2501-2	2501-2	2501-2	2501-2	2501-2	2501-2
--------	--------	--------	--------	--------	--------

25,000	25,000	25,000	25,000	25,000	25,000
--------	--------	--------	--------	--------	--------

N/A	N/A	N/A	N/A	N/A	N/A
-----	-----	-----	-----	-----	-----

6	5	4	5	5	5
---	---	---	---	---	---

N/A	N/A	N/A	N/A	N/A	N/A
-----	-----	-----	-----	-----	-----

54"x75"	54"x75"	48"x75"	48"x75"	48"x75"	48"x75"
---------	---------	---------	---------	---------	---------

N/A	N/A	N/A	N/A	N/A	N/A
-----	-----	-----	-----	-----	-----

32"x74"	N/A	N/A	N/A	32"x74"(2)	N/A
---------	-----	-----	-----	------------	-----

N/A	54"x74"	60"x80"	54"x74"	N/A	54"x74"
-----	---------	---------	---------	-----	---------

Std (2)	Std (1)	N/A	Std (1)	Std (1)	Std (1)
---------	---------	-----	---------	---------	---------

N/A	N/A	N/A	N/A	N/A	N/A
-----	-----	-----	-----	-----	-----

N/A	N/A	N/A	N/A	N/A	N/A
-----	-----	-----	-----	-----	-----

N/A	N/A	N/A	N/A	N/A	N/A
-----	-----	-----	-----	-----	-----

N/A	N/A	N/A	N/A	N/A	N/A
-----	-----	-----	-----	-----	-----

N/A	N/A	N/A	N/A	N/A	N/A
-----	-----	-----	-----	-----	-----

N/A	N/A	N/A	N/A	N/A	N/A
-----	-----	-----	-----	-----	-----

N/A	N/A	N/A	N/A	N/A	N/A
-----	-----	-----	-----	-----	-----

N/A	N/A	N/A	N/A	N/A	N/A
-----	-----	-----	-----	-----	-----

N/A	N/A	N/A	N/A	N/A	N/A
-----	-----	-----	-----	-----	-----

N/A	N/A	N/A	N/A	N/A	N/A
-----	-----	-----	-----	-----	-----

N/A	N/A	N/A	N/A	N/A	N/A
-----	-----	-----	-----	-----	-----

N/A	N/A	N/A	N/A	N/A	N/A
-----	-----	-----	-----	-----	-----

N/A	N/A	N/A	N/A	N/A	N/A
-----	-----	-----	-----	-----	-----

N/A	N/A	N/A	N/A	N/A	N/A
-----	-----	-----	-----	-----	-----



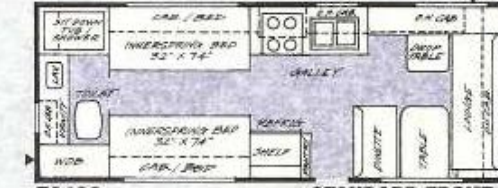
T2362



T2363



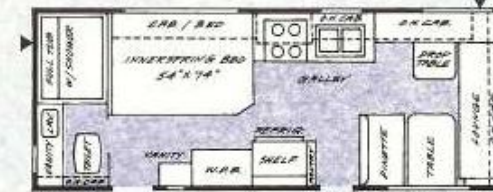
T2364



T2400

STANDARD FRONT A

See below for optional front available.



T2402

STANDARD FRONT A

See below for optional front available.



T2480

STANDARD FRONT A

See below for optional front available.



T2491

STANDARD FRONT A/T2491-T2493

See right for optional front available.



T2492



T2493



OPT. FRONT B

THESE MODELS ONLY:

T2361-T2364,

T2400-T2402, T2480,

T2491-T2494

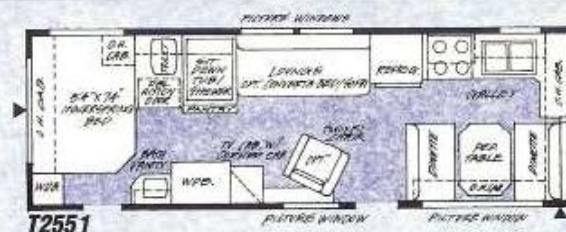
Ask dealer about Seville Package applicable for models T2050-T2493.



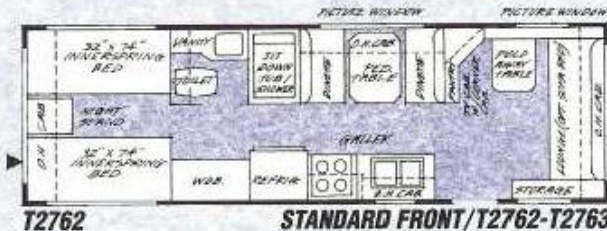
S

Standard Features T2551-T3561

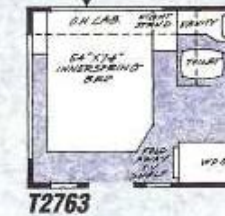
● Electric Brakes on All Wheels ● 12-V Electric Water Pump ● 6-gal. Gas Water Heater ● 25-gal. Gray Water System ● Double Stainless Steel Sink ● Shower & Tub ● 40-gal. Septic System w/Marine Toilet ● Two 30-lb. Standard L.P. Gas Tanks w/Auto Regulator ● Gas/Elec. Dometic Refrigerator (Model #2601-2) ● 4-Burner Cooking Range w/Oven ● Range Hood w/Fan & Light ● 12-V Light System w/Converter & Charger ● 5" Button and Wrap Upholstery



T2551



T2762



T2763

Specifications	T2551	T2661	T2662	T2663	T2762	T2763	T2962	T2963	T3070	T3340	T3360	T3450	T3470	T3560	T3561
Length	25'11"	26'11"	26'11"	26'11"	27'8"	27'8"	29'6"	29'6"	30'6"	33'7"	33'7"	34'6"	34'6"	35'4"	35'4"
Body Width	8'	8'	8'	8'	8'	8'	8'	8'	8'	8'	8'	8'	8'	8'	8'
Interior Height	6'4"	6'4"	6'4"	6'4"	6'4"	6'4"	6'4"	6'4"	6'4"	6'4"	6'4"	6'6"	6'6"	6'4"	6'4"
Axle(s)	Tandem	Tandem	Tandem	Tandem	Tandem	Tandem	Tandem	Tandem	Tandem	Tandem	Tandem	Tandem	Tandem	Tandem	Tandem
Axle Weight* (Lbs.) Empty Approx.	3800	3805	3815	3800	3800	3790	4140	4145	4110	4470	4670	4520	4465	4375	4360
Hitch Weight* (Lbs.) Empty Approx.	550	580	550	545	630	630	530	520	735	800	770	770	815	1140	1135
Gross Vehicle Weight* Approx.	4350	4385	4365	4345	4430	4420	4670	4665	4845	5270	5440	5290	5280	5515	5495
Tire Size—Load Range	H78-15-B	H78-15-B	H78-15-B	H78-15-B	H78-15-B	H78-15-B	H78-15-B	H78-15-B	H78-15-B	L78-15-B	L78-15-B	L78-15-B	L78-15-B	L78-15-B	L78-15-B
Gross Vehicle Weight Rating Lbs.	6440	6440	6440	6440	6440	6440	6440	6440	6440	7000	7000	7000	7000	7000	7000
Fresh Water System (Approx. Gals.)	30	34	34	34	34	34	30	30	32	30	32	32	32	34	34
Furnace (Gas) w/Automatic Ignition (BTU's)	31,000◆	31,000◆	31,000◆	31,000◆	31,000◆	31,000◆	31,000◆	31,000◆	31,000◆	31,000◆	31,000◆	35,000◆	35,000◆	35,000◆	35,000◆
Sleeps	5	5	5	5	5	5	5	5	5	5	7	5	5	7	7
Dinette Bed	37"x74"	37"x74"	37"x74"	37"x74"	37"x74"	37"x74"	37"x74"	37"x74"	37"x74"	37"x74"	37"x74"	37"x74"	37"x74"	37"x74"	37"x74"
Lounge Bed	48"x75"	48"x75"	48"x75"	48"x75"	48"x75"	48"x75"	48"x75"	48"x75"	48"x75"	48"x75"	48"x75"	48"x75"	48"x75"	48"x75"	48"x75"
Innerspring Twin Bed**	N/A	N/A	32"x74"(2)	N/A	32"x74"(2)	N/A	32"x74"	N/A	32"x74"	32"x74"	32"x74"	N/A	32"x74"	32"x74"	32"x74"
Innerspring Double Bed**	54"x74"	54"x74"	N/A	54"x74"	N/A	54"x74"	N/A	54"x74"	N/A	54"x74"	N/A	N/A	N/A	54"x74"	54"x74"
Innerspring Queen Size Bed**	N/A	N/A	N/A	N/A	N/A	N/A	N/A	N/A	60"x80"	60"x80"	N/A	60"x80"	60"x80"	60"x80"	60"x80"
Upper Criss-Cross or Stack Bunks, 5" Foam	N/A	N/A	N/A	N/A	N/A	N/A	N/A	N/A	N/A	N/A	32"x74"	N/A	N/A	32"x74"	N/A
Lower Criss-Cross or Stack Bunks, 5" Foam	N/A	N/A	N/A	N/A	N/A	N/A	N/A	N/A	N/A	N/A	32"x74"	N/A	N/A	32"x74"	N/A

◆ Ducted

■ Optional

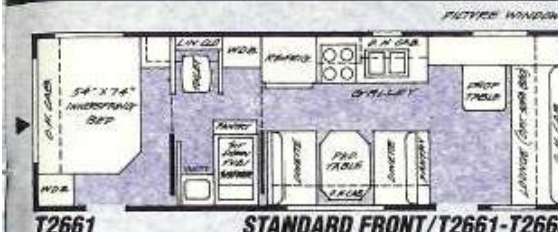
▲ Outside Storage/
Floorplans Only

Std.—Standard Equipment

N/A—Not Available

*All weights are for standard equipped models. Weights will vary according to installation and distribution of options and self-containment liquids and construction materials. **Includes bedspread(s), pillow(s) and sham(s).

Ask dealer about Seville Package applicable for models T2551-T3561.



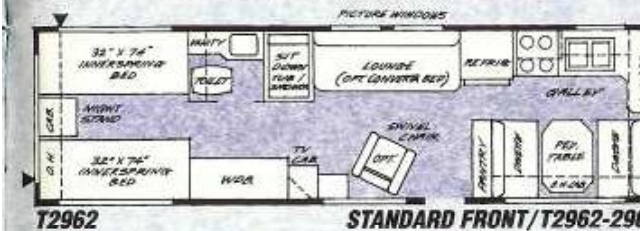
T2661



T2662



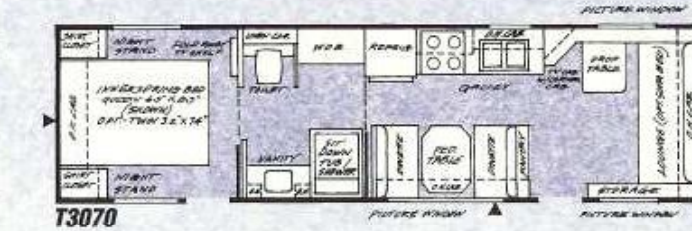
T2663



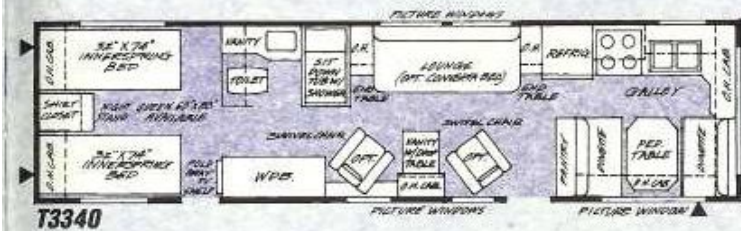
T2962



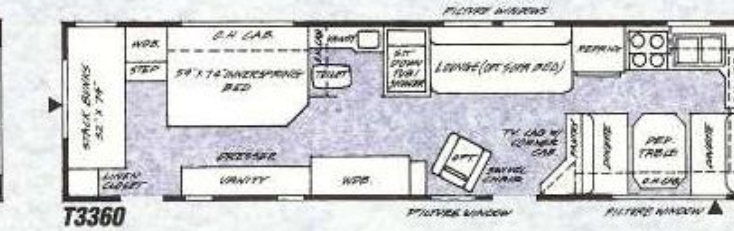
T2963



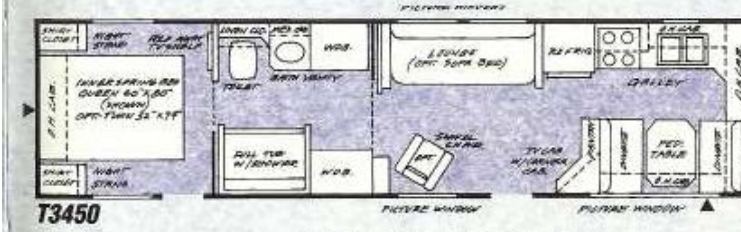
T3070



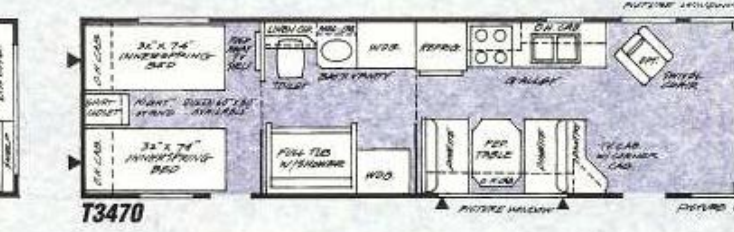
T3340



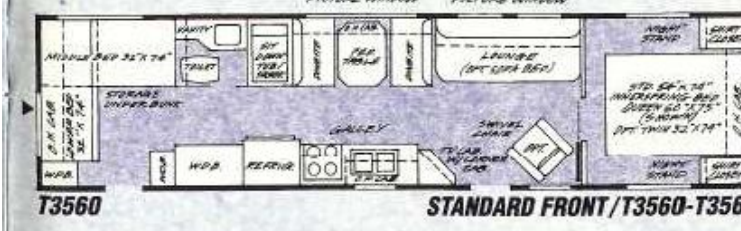
T3360



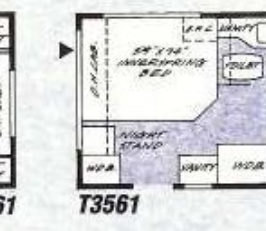
T3450



T3470



T3560

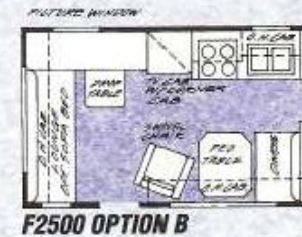
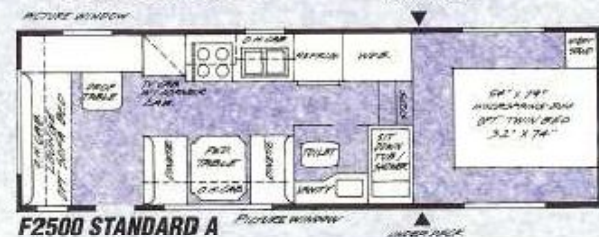
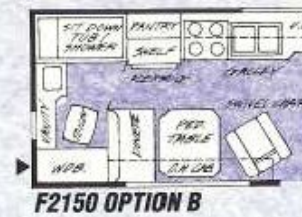
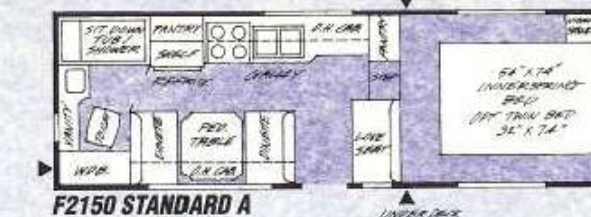


T3561



Standard Features Fifth Wheels

- Electric Brakes on All Wheels
- 12-V Electric Water Pump
- 6-gal. Gas Water Heater
- Double Stainless Steel Sink
- Two 20-lb. Standard L.P. Gas Tanks (F2150-F2500)
- Two 30-lb. Standard L.P. Gas Tanks (F2950-F2970)
- 4-Burner Cooking Range w/Oven
- Range Hood w/Fan & Light
- 12-V Light System w/Converter & Charger
- 5" Button and Wrap Upholstery



Specifications/Fifth Wheels	F2150	F2500	F2950	F2970
Length	21'6"	25'10"	29'11"	29'11"
Body Width	7'	8'	8'	8'
Interior Height	6'1"	6'4"	6'6"	6'6"
Axle(s)	Tandem	Tandem	Tandem	Tandem
Axle Weight (Empty) Approx.*	2610	3400	N/P	N/P
Pin Weight (Empty) Approx.*	750	825	N/P	N/P
Gross Vehicle Weight Approx.*	3360	4225	N/P	N/P
Tire Size—Load Range	C78-14-B	F78-14-B	L78-15-B	L78-15-B
Gross Vehicle Weight Rating Lbs.	4480	5440	7000	7000
Fresh Water System (Approx. Gals.)	24	24	32	32
Gray Water System (Approx. Gals.)	25	25	25	25
Septic System (Approx. Gals.)	25	40	40	40
Refrigerator, Gas/Elec., Dometic Model	2401-2	2501-2	2601-2	2601-2
Furnace (Gas) w/Automatic Ignition (BTU's)	20,000◆	25,000◆	35,000◆	35,000◆
Sleeps	3	5	5	5
Dinette Bed	36"x74"	36"x74"	37"x74"	37"x74"
Lounge Bed	N/A	48"x75"	48"x75"	48"x75"
Innerspring Twin Bed****	32"x74"■	32"x74"■	32"x74"■	32"x74"■
Innerspring Double Bed****	54"x74"	54"x74"	60"x80"	60"x80"

- ◆ Ducted
- Optional
- ▼ w/Piezo Ignition
- ▲ Outside Storage/ Floorplans Only
- Std.—Standard Equipment
- N/A—Not Available
- Opt.—Optional Equipment

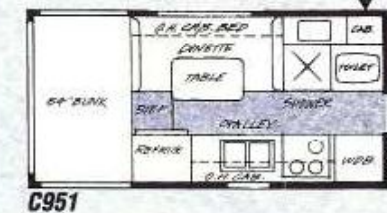
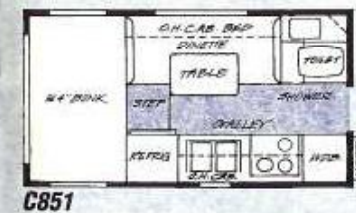
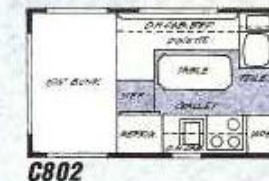
Specifications/Truck Campers	C750	C802	C851	C951	C1150
Overall Length	11'5"	13'6"	14'11"	15'11"	18'0"
Overall Width	6'8"	7'	8'	8'	8'
Interior Height	6'1"	6'1"	6'4"	6'4"	6'4"
Approx. Weight (Wet)**	1440	1655	2015	2180	2495
Fresh Water System (Approx. Gals.)	12	17	23	23	23
Gray Water System (Approx. Gals.)	N/A	9	13	13	13
Shower	N/A	N/A	Std.	Std.	Std.
Septic System (Approx. Gals.)	6	6	10	10	10
Marine Toilet	Std.	Std.	Std.	Std.	Std.
Standard L.P. Gas Tank(s)	1-20#	1-20#	2-20#	2-20#	2-20#
Refrigerator, Gas/110V, Dometic Model	2301-2	2301-2	N/A	N/A	N/A
Refrigerator, Gas/110V/12V, Dometic Model	Opt.	Opt.	2401-3	2401-3	2401-3
3-Burner Range Top	Std.	Std.	N/A	N/A	N/A
3-Burner Range w/Oven	Opt.	Opt.	Std.	Std.	Std.
4-Burner Range w/Deep Oven & Glass Door	N/A	N/A	Opt.	Opt.	Opt.
Furnace (Gas-BTU's)	12,000▼	12,000▼	12,000▼	12,000▼	16,000▼
Insulated & Undercoated	Std.	Std.	N/A	N/A	N/A
Insulated w/Enclosed Underside	N/A	N/A	Std.	Std.	Std.
Heated Floor	N/A	N/A	N/A	Std.	Std.
Luggage Rack & Ladder	Opt.	Opt.	Std.	Std.	Std.
Dinette Bed	36"x64"	38"x69"	40"x69"	40"x69"	31"x74"
Front Cab Over Bed	54"x78"	54"x80"	54"x86"	54"x86"	54"x86"
Cabinet Bunk Size (32" x Dinette Length)	N/A	Std.	Std.	Std.	Std.

*All weights are for standard equipped models. Weights will vary according to installation and distribution of options and self-containment liquids and construction materials. **Wet Weight—Standard unit w/fresh water tank and L.P. gas tank(s) full. ***Includes ladder. ****Includes bed-spread(s), pillow(s), and sham(s).

Standard Features Truck Campers

- 12-V Electric Water Pump
- 6-gal. Gas Water Heater*
- Stainless Steel Sink
- Range Hood w/Fan & Light
- 12-V Light System w/Converter
- Ground Fault Protector
- Safety Glass w/Laminated Front Window
- Slider Cab Window
- Set of 3 Camper Jacks (C1150 has 4)
- 5" Upholstery

*Standard on models C851, C951, C1150 only. Note: The proper match of a truck and slide-in camper is important. Make sure the truck has the proper cargo weight rating and center of gravity location to receive the camper. Some trucks can be "beefed up" to accommodate greater cargo capacity. Contact truck dealer for more information.



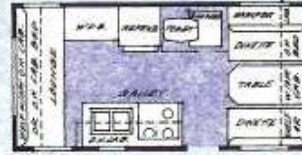
Standard Features T150-T351

● Electric Brakes on All Wheels ● 12-V Electric Water Pump ● 6-gal. Gas Water Heater ● Double Stainless Steel Sink** ● Shower/Tub** ● Two 20-lb. L.P. Gas Tanks*** ● 3-Burner Cooking Range w/Oven*** ● Range Hood w/Fan & Light ● 12-V Light System w/Converter & Charger ● 5" Button and Wrap Upholstery Dinette and Lounge

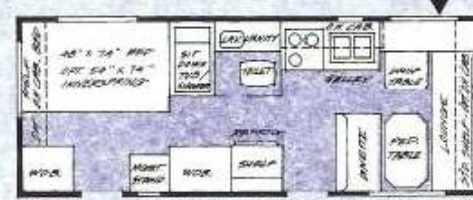
*Optional on T150 **Not available on T150 ***Optional on T150 and T170



T150



T170



T221

STANDARD FRONT A/T221-T224

See below for optional front available.



T222



T223

Specifications	T150	T170	T205	T220	T221	T222	T223	T224	T241	T242	T243	T244	T261	T262	T263	T271
Length	15'11"	17'10"	20'10"	22'8"	22'7"	22'7"	22'7"	22'7"	24'2"	24'2"	24'2"	24'2"	26'11"	26'11"	26'11"	27'9"
Body Width	7'	7'	8'	8'	8'	8'	8'	8'	8'	8'	8'	8'	8'	8'	8'	8'
Interior Height	6'1"	6'1"	6'4"	6'4"	6'4"	6'4"	6'4"	6'4"	6'4"	6'4"	6'4"	6'4"	6'4"	6'4"	6'4"	6'4"
Axle(s)	Single	Tandem	Tandem	Tandem	Tandem	Tandem	Tandem	Tandem	Tandem	Tandem	Tandem	Tandem	Tandem	Tandem	Tandem	Tandem
Axle Weight*(Lbs.) Empty Approx.	1605	1960	2535	2690	2625	2590	2630	2655	2780	2675	2750	2795	3345	3225	3295	3365
Hitch Weight*(Lbs.) Empty Approx.	185	270	355	340	435	455	440	420	440	475	460	445	485	520	510	550
Gross Vehicle Weight* Approx.	1790	2230	2890	3030	3060	3045	3070	3075	3220	3150	3210	3240	3830	3745	3805	3915
Tire Size—Load Range	F78-14-B	B78-13-B	C78-14-B	C78-14-B	C78-14-B	C78-14-B	C78-14-B	C78-14-B	F78-14-B	F78-14-B	F78-14-B	F78-14-B	F78-14-B	F78-14-B	F78-14-B	F78-14-B
Gross Vehicle Weight Rating Lbs.	2720	4000	4480	4480	4480	4480	4480	4480	5000	5000	5000	5000	5000	5000	5000	5000
Fresh Water System (Approx. Gals.)	18	24	24	24	34	34	34	34	34	34	34	34	34	34	34	32
Gray Water System (Approx. Gals.)	21	25	25	25	25	25	25	25	25	25	25	25	25	25	25	25
Septic System (Approx. Gals.)	10	25	25	25	25	25	25	25	25	25	25	25	25	25	25	25
Refrigerator, Gas/Elec., Dometic Model	2301-2	2301-2	2401-2	2401-2	2401-2	2401-2	2401-2	2401-2	2401-2	2401-2	2401-2	2401-2	2501-2	2501-2	2501-2	2501-2
Furnace (Gas) (BTU's)	12,000	12,000	20,000	20,000	20,000	20,000	20,000	20,000	20,000	20,000	20,000	20,000	25,000	25,000	25,000	25,000
Sleeps (Optional)	4(6)	4(6)	4(6)	6(7)	4(6)	4(6)	4(6)	6(7)	4(6)	4(6)	4(6)	6(7)	5(7)	5(7)	5(7)	6(8)
Dinette Bed	43"x74"	43"x74"	48"x75"	56"x75"	N/A	N/A	N/A	N/A	N/A	N/A	N/A	N/A	37"x74"	37"x74"	37"x74"	56"x75"
Front or Rear Lounge Bed	48"x82"	48"x82"	48"x75"	N/A	48"x75"	48"x75"	48"x75"	48"x75"	54"x75"	54"x75"	54"x75"	54"x75"	48"x75"	48"x75"	48"x75"	N/A
Side Lounge Bed	N/A	N/A	N/A	48"x75"	N/A	N/A	N/A	N/A	N/A	N/A	N/A	N/A	N/A	N/A	N/A	48"x75"
Cabinet Bed(s)	Opt.(2)	Opt.(2)	Opt.(2)	Opt.(1)	Opt.(2)	Opt.(2)	Opt.(2)	Opt.(1)	Opt.(2)	Opt.(2)	Opt.(2)	Opt.(1)	Opt.(2)	Opt.(2)	Opt.(2)	Opt.(2)
Upper Criss-Cross or Stack Bunks, 4" Foam	N/A	N/A	N/A	32"x74"	N/A	N/A	N/A	28"x74"(2)	N/A	N/A	N/A	28"x74"(2)	N/A	N/A	N/A	N/A
Lower Criss-Cross or Stack Bunks, 4" Foam	N/A	N/A	N/A	32"x74"	N/A	N/A	N/A	32"x74"(2)	N/A	N/A	N/A	32"x74"(2)	N/A	N/A	N/A	N/A
Double Bed, 4" Foam (Innerspring Opt.)	N/A	N/A	N/A	N/A	48"x74"	48"x74"	N/A	48"x74"	N/A	48"x74"	N/A	48"x74"	N/A	48"x74"	48"x74"	48"x74"
Twin Beds, 4" Foam (Innerspring Opt.)	N/A	N/A	N/A	N/A	N/A	32"x74"	N/A	N/A	N/A	32"x74"	N/A	N/A	32"x74"	N/A	N/A	N/A

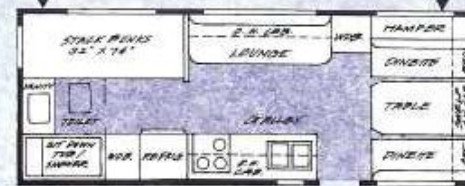
◆ Ducted w/Auto Ignition
▲ Outside Storage/
Floorplans Only
● w/Marine Toilet
Std.—Standard
Equipment

N/A—Not Available
Opt.—Optional
Equipment
N/P—Not Available at
time of printing.

*All weights are for standard equipped models. Weights will vary according to installation and distribution of options and self-containment liquids and construction materials.



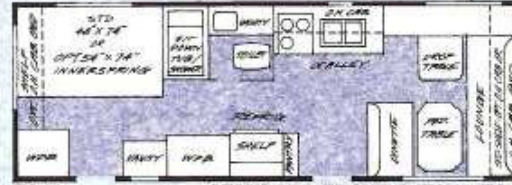
T205



T220



T224



T241

STANDARD FRONT A/T241-T244

See below for optional front available.



T242

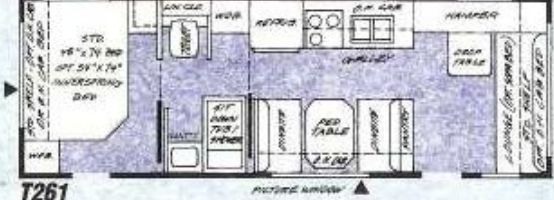


T243



T244

T272	T273	T274	T350	T351
27'9"	27'9"	27'9"	35'4"	35'4"
8'	8'	8'	8'	8'
6'4"	6'4"	6'4"	6'4"	6'4"
Tandem	Tandem	Tandem	Tandem	Tandem
3260	3335	3390	3955	3935
585	570	530	960	960
3845	3905	3920	4915	4895
F78-14-B	F78-14-B	F78-14-B	H78-15-B	H78-15-B
5000	5000	5000	6440	6440
32	32	32	34	34
25	25	25	25	25
25	25	25	40	40
2501-2	2501-2	2501-2	2501-2	2501-2
25,000	25,000	25,000	31,000	31,000
6(8)	6(8)	8(9)	8	7(8)
56"x75"	56"x75"	56"x75"	37"x75"	37"x75"
N/A	N/A	N/A	N/A	N/A
48"x75"	48"x75"	48"x75"	48"x75"	48"x75"
Opt.(2)	Opt.(2)	Opt.(1)	N/A	Opt.(1)
N/A	N/A	28"x74"(2)	28"x74"	N/A
N/A	N/A	32"x74"(2)	32"x74"(2)	N/A
N/A	48"x74"	N/A	54"x74"	1780"x75" (1148"x74")
32"x74"	N/A	N/A	Opt.	Opt.



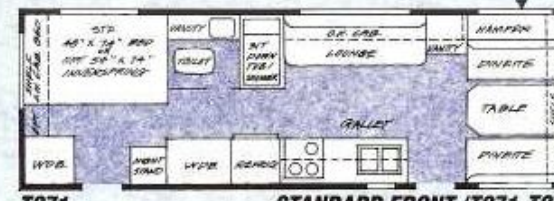
T261



T262



T263



T271



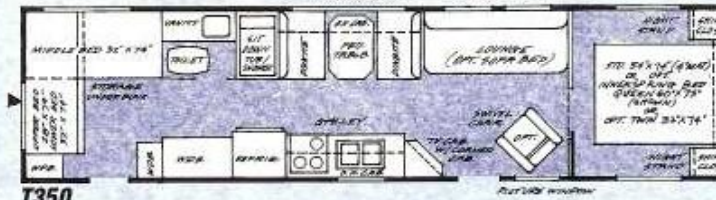
T272



T273



T274



T350



T351



OPT. FRONT B
THESE MODELS ONLY:
T221-T224, T241-T244

Color Harmony

Sunline



Optional Velour



StarRay



Please Note: Colors as represented may vary slightly by fabric lot. See your dealer for color selection and application.

Lancaster Decor Package living area shown in model T2363 (Option B)

Lancaster Package

Celebrate Sunline's 25th Anniversary Year by ordering your travel trailer with a Lancaster Decor Package (available in 22 ft. to 35ft. innerspring bed models only.)*

Included in the Package are:

- Lancaster Print material with matching valances
- Quilted bedspread with matching pillows
- Wooden heart curtain tie-

- backs on all picture windows
- Grapevine wreath with PA Dutch cut-out
- Wooden heart pegged towel holder
- Wooden wall mount Amish postcard holder
- Decorative wooden tulips mounted on display holder
- Wreath and pineapple kitchen backsplash.

*Package not available in StarRay or Truck Campers.



S

safety. Sunline manufactures its Travel Trailers, Fifth Wheels and Truck Campers to meet or exceed the requirements for the installation of plumbing, fuel burning, electrical and other safety related systems, such as emergency exit(s) and safety glass in all Truck Campers and Fifth Wheels. For operational safety, Sunline Travel Trailers include a breakaway device and SAE-approved safety chains. Sunline also engineers its safety chains using the preferred U-bolt method rather than welding chains directly to the frame. Your dealer can fully explain these and other Sunline safety and product advantages.

We hope you find the information supplied in this brochure comprehensive and helpful. Additionally, photographs in this brochure may show optional equipment. Check with your Sunline dealer for complete information.

Your safety and satisfaction when towing depend upon the proper match of tow vehicle to RV and the proper use of correct equipment. Make sure you consult your automobile or truck dealer and your recreational vehicle dealer.

Sunline's policy of continual design and manufacturing improvements requires that models, specifications, equipment and prices be subject to change without notice.



SunLine

COACH COMPANY

The Choice is Yours.

R.D.1, Denver, Pennsylvania 17517 1-215-267-2858